

06

November 2019

Wednesday

LECTURE

CHL - Centre
4, rue Ernest Barblé
L-1210 Luxembourg
Room: Amphitheatre

11.30-12.30pm

MEET THE SPEAKER*

Light snacks provided
LIH, 1A-B, rue Thomas Edison
L-1445 Strassen
Room: Curie/Pasteur (3rd floor)

12.45-2.00pm

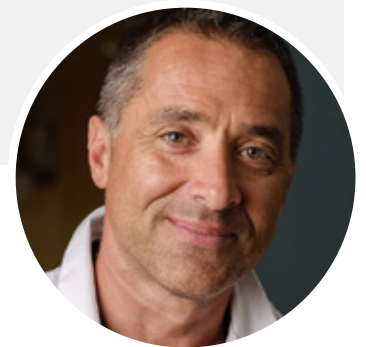


*Registration is mandatory to meet the speaker by sending an email to tania.zamboni@lih.lu

e-Health in Oncology: from prevention to treatment management

ABSTRACT

More than 300 000 e-health applications are available in different stores; less than 5 were associated with survival benefit in randomized trials. We will address and discuss the main survival and cost-effectiveness results of recent trials in oncology and the concept of electronic patient-reported outcome (e-PRO) from chaos theory. It led to the first application that allowed detection of cancer recurrence at first symptoms and superiority to CT-scan planned imaging. We will then address the short and long terms perspectives for 2.0 follow-up of cancer patients, prevention, early detection and treatment management of cancer allowed by e-PRO and artificial intelligence combination for cancer patients.



SPEAKER

Dr Fabrice DENIS

Associate Researcher at the French Academic National Centre of Scientific Research, University of Rouen, Oncologist and joint manager of the Institut Inter-régional de Cancérologie Jean Bernard, e-health and telemedicine expert at Hyperion (France)

HOST:

LIH

INVITED BY:

Prof Laetitia HUIART
Department of Population Health

www.lih.lu

Supported by:



Partners:

